



Icom America Inc.

Quick Reference Tutorial



IDAS
ICOM DIGITAL ADVANCED SYSTEM

DIGITAL FEATURES

Programming for Remote Monitor





Icom America Inc.

Before You Program

Desired Action:

- The Remote Monitor feature allows one radio to open the mic of a targeted radio and hear any audio in the vicinity of that radio. This feature is active for Individual radios, not for Talk Groups.

Assumptions:

- Proper frequencies are entered
- Proper RAN codes are entered
- Proper squelch is set
- Radio is 6.25kHz capable (UT-119H/126H).



Icom America Inc.

Programming Remote Monitor

In Zone Operation: Set Zone Type to Conventional.

Zone	Text	Zone Type	P
1		Conventional	
2		Conventional	
3		SmarTrunk	
4		LTR	



Icom America Inc.

Programming Remote Monitor

In Memory Channel 1, set **CH Type** to **Digital**.

Zone 1: (Left CH - 496)					
CH	Auto Scan	CH Type	Auto Reset	CH Mute	
1- 1		Digital	Tim-B	OR	
1- 2		Analog			
1- 3		Mixed-Ana : Mixed & TX=Analog			
1- 4		Mixed-Digi : Mixed & TX=Digital			
1- 5		Digital			
1- 6					



Icom America Inc.

Programming Remote Monitor

- In **Unit ID**, enter your radio ID.
- Set **Squelch Type** to **Sel** (Selective), if you want the squelch to open with the proper RAN *and* Talk Group or Individual ID.

Zone 1: (Left CH - 496)							
Digital						MDC	
CH	Log	RX RAN	TX RAN	Unit ID	Talkgroup List No.	Squelch Type	System
1- 1		1	<-	1004	1	Sel	
1- 2						OFF : OFF	
1- 3						RAN : RAN	
1- 4						: Selective	
1- 5							
1- 6							



Icom America Inc.

Programming Remote Monitor

- Go to **Digital -> Individual -> Individual ID**.
- Enter all Individual ID Names and numeric IDs of the other radios in the system you wish to contact. This alias list is used when selecting other radios for Selective Calling, Call Alerts, etc.

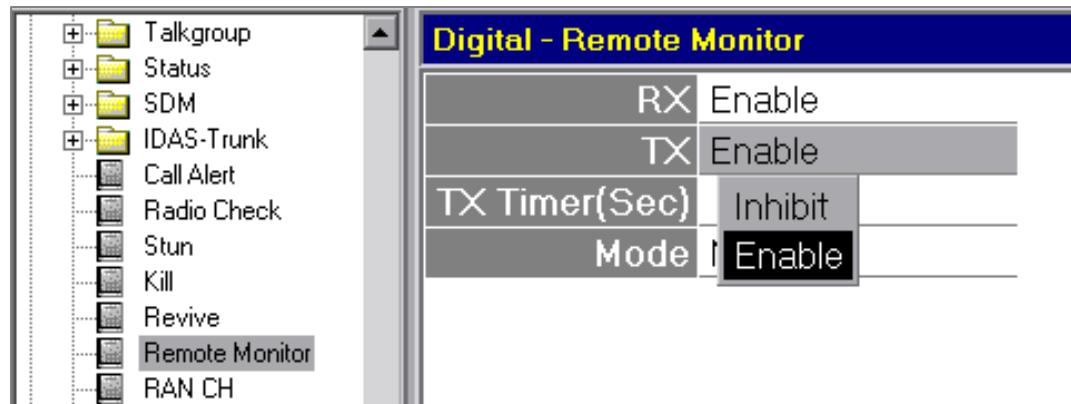
Digital - Individual - Individual ID List		
ID		
No.	ID	ID Name
1	1001	John
2	1002	Paul
3	1003	George
4	1004	Ringø
New		



Icom America Inc.

Programming Remote Monitor

- In the **Remote Monitor** window, set **RX** to **Enable**, which allows your radio to be monitored.
- Set **TX** to **Enable** to allow you to send a request to monitor the target radio.
- Set the time that the target radio will auto-transmit in **TX Timer(Sec)**.





Icom America Inc.

Programming Remote Monitor

- Go to **Common** -> **Key & Display** and assign a **Digital Button** to one of the programmable keys.

Key & Display Assign		
Key		
Mobile / Portable		Conventional
P0 /	P0	Digital Button
P1 /	P1	Null
P2 /	P2	Null
P3 /	P3	Null
P4 /	Side1	Null
Up /	Side2	CH Up
Down /	Side3	CH Down
OPF0 /	Emer	Null

- Write the file into the radio.
- The radio is now enabled for Remote Monitor.



Icom America Inc.

Programming Remote Monitor

To Monitor Another Radio

1. Press *and hold* the key assigned for Digital calls. The display will briefly show INDIVIDUAL or TALKGROUP.
2. If the selection is TALKGROUP, press and hold the key again, then press and hold to select INDIVIDUAL.
3. Press the up/down keys to select REM MON.
4. Press the programmed key again to bring up the list of individual IDs.
5. Scroll to the desired radio ID by pressing the Up/Down keys.
6. Press PTT. If successful, your display will show REM TX, then REM ACK. If it failed, your display will show REM FAIL. The green RX light on you radio will stay on as long as the mic is open on the target radio (the duration set in the TX Timer(Sec) field).