



Icom America Inc.

Quick Reference Tutorial



▲ IC-F3161DT/T

▲ IC-F4161DS/S



IDAS

ICOM DIGITAL ADVANCED SYSTEM

DIGITAL FEATURES

*Programming for
Status Messages*



Icom America Inc.

Before You Program

Desired Action:

- You can set your personal status to send to another radio, or group of radios, or allow your status to be accessed (polled) by other radios. Status messages can be sent and received using either Individual IDs or Talk Group IDs.

Assumptions:

- Proper frequencies are entered
- Proper RAN codes are entered
- Proper squelch is set
- Radio is 6.25kHz capable (UT-119H/126H).



Icom America Inc.

Programming Status Messages

In Zone Operation: Set Zone Type to Conventional.

Zone	Text	Zone Type	P
1		Conventional	
2		Conventional	
3		SmarTrunk	
4		LTR	



Icom America Inc.

Programming Status Messages

In Memory Channel 1, set **CH Type** to **Digital**.

The screenshot shows a software interface for programming memory channels. On the left, a tree view shows 'Memory CH' expanded to 'Zone Operation' and then to channel '1:'. The main area displays 'Zone 1: (Left CH - 496)'. A table lists channel settings for channels 1-1 through 1-6. Channel 1-1 is selected, and a dropdown menu is open showing options: Analog, Mixed-Ana : Mixed & TX=Analog, Mixed-Digi : Mixed & TX=Digital, and Digital (highlighted).

CH	Auto Scan	CH Type	Auto Reset	CH Mute
1- 1		Digital	Tim-B	OR
1- 2		Analog		
1- 3		Mixed-Ana : Mixed & TX=Analog		
1- 4		Mixed-Digi : Mixed & TX=Digital		
1- 5		Digital		
1- 6				



Icom America Inc.

Programming Status Messages

- In **Unit ID**, enter your radio ID.
- Set **Squelch Type** to **Sel** (Selective), if you want the squelch to open with the proper RAN *and* Talk Group or Individual ID.

Zone 1: (Left CH - 496)							
Digital							MDC
CH	Log	RX RAN	TX RAN	Unit ID	Talkgroup List No.	Squelch Type	System
1- 1		1	<-	1004	1	Sel	
1- 2						OFF : OFF	
1- 3						RAN : RAN	
1- 4						: Selective	
1- 5							
1- 6							



Icom America Inc.

Programming Status Messages

- Go to the **Digital -> Individual** or **Talkgroup** folder.
- Enter all Individual/Talkgroup ID Names and numeric IDs of the other radios/groups in the system you wish to contact. This alias list is used when selecting other radios for Selective Calling, Call Alerts, etc.

No.	ID	ID Name
1	1001	John
2	1002	Paul
3	1003	George
4	1004	Rinso
New		

No.	ID	ID Name
1	10	Arena
2	11	Parkins Lot
3	12	Office
New		



Icom America Inc.

Programming Status Messages

Go to the **Status List** window and set the following:

- **Display Text:** Enter the text you want displayed on other radios.
- **RX Status:** Set **RX** to **Enable** this radio to receive status messages.
- **TX Status:** Enter the text you want to send to other radio in **Display Text**.

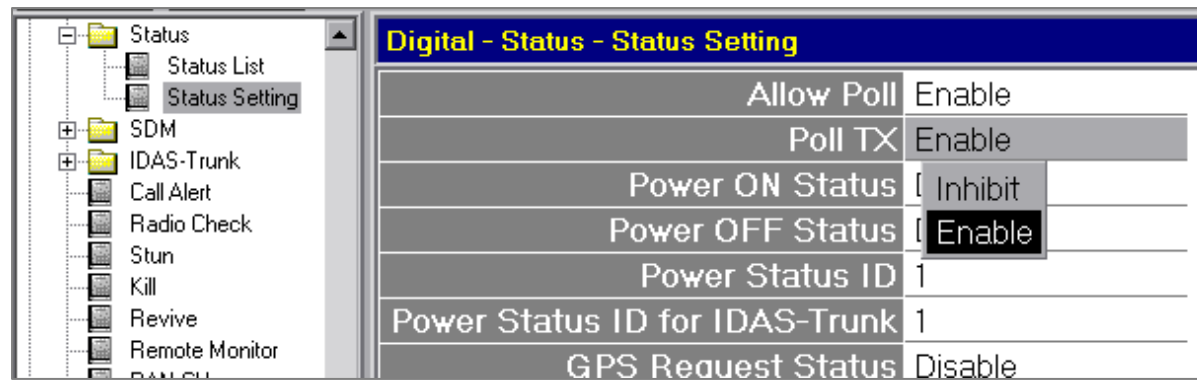
No.	RX Status			TX Status		
	Display Text	RX	Ringer	Dec EXO	AUX	Display Text
1	Busy	Enable	PiPi	Inhibit		Busy
2	In a Meeting	Enable	PiPi	Inhibit		In a Meeting
3	Call Truck 1	Enable	PiPi	Inhibit		Call Truck 1
4	RX Status 04	Enable	PiPi	Inhibit		TX Status 04
5	RX Status 05	Enable	PiPi	Inhibit		TX Status 05
6	RX Status 06	Enable	PiPi	Inhibit		TX Status 06



Icom America Inc.

Programming Status Messages

- Go to the **Status Setting** window and set the following:
- Set **Poll TX** to **Enable** to allow this radio to poll status from other radios.
- Set **Allow Poll** to **Enable**. This gives other radios the ability to poll your status.





Icom America Inc.

Programming Status Messages

- Go to **Common** -> **Key & Display** and assign a **Digital Button** to one of the programmable keys.

The screenshot shows the 'Key & Display Assign' window. On the left is a tree view of the software's settings, with 'Common' expanded to show 'Key & Display'. On the right is a table with the following data:

Key & Display Assign		
Key		
Mobile / Portable		Conventional
P0 /	P0	Digital Button
P1 /	P1	Null
P2 /	P2	Null
P3 /	P3	Null
P4 /	Side1	Null
Up /	Side2	CH Up
Down /	Side3	CH Down
OPF0 /	Emer	Null

- Write the file into the radio.
- The radio is now enabled to send/receive status messages.



Icom America Inc.

Programming Status Messages

To Send a Status Message

1. Press *and hold* the key assigned for Digital calls. The display will briefly show INDIVIDUAL or TALKGROUP.
2. If you want to change from either INDIVIDUAL or TALKGROUP, press and hold the key to return to the memory channel display, then press and hold to select the option you want.
3. Press the programmed key again to bring up the list of Individual or Talk Group IDs.
4. Scroll to the desired ID by pressing the Up/Down keys.
5. Press PTT. Your status message and your Individual or Talk Group ID will show on the target radio's display.